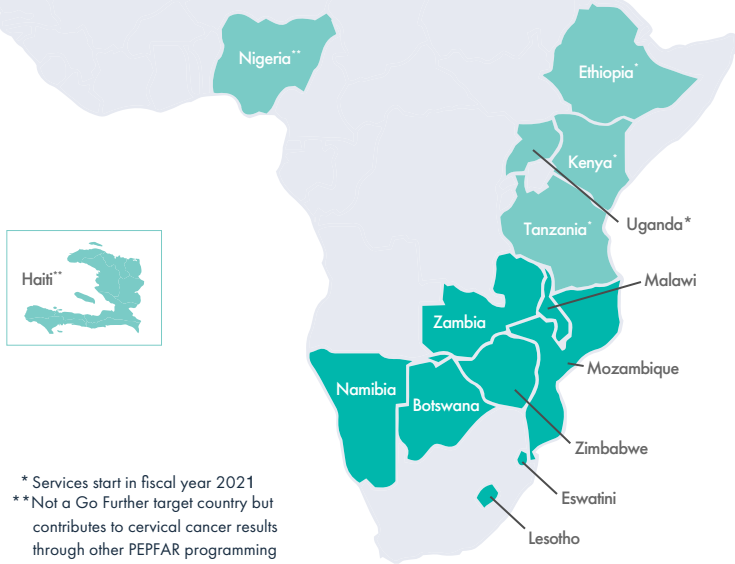


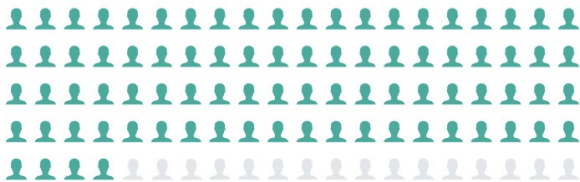
3,400,618

cervical cancer screenings supported for women living with HIV by Go Further through Sept. 2021

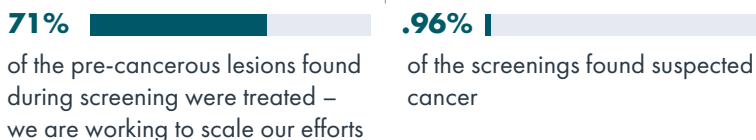


* Services start in fiscal year 2021
** Not a Go Further target country but contributes to cervical cancer results through other PEPFAR programming

84% are first-time screenings.



179,574 (5%) screenings found pre-cancerous lesions or suspected cancer



The Bush Institute and PEPFAR have partnered to save lives since 2011. Since Go Further was launched in 2018, PEPFAR has invested nearly

\$130 million

in cervical cancer screening and treatment for women living with HIV.



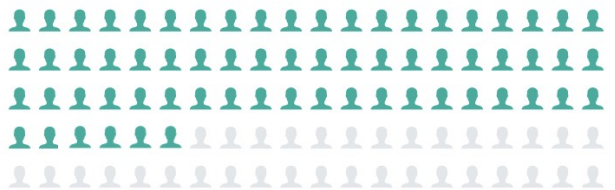
women are living with HIV in the twelve Go Further target countries

Women with HIV are **6x** times more likely to develop cervical cancer

Cervical cancer is one of the most common cancers in women living in Sub-Saharan Africa, with

110,345

women diagnosed annually



Without treatment, **66%** of these women will die from the disease.

Launched in May 2018, Go Further is an innovative public-private partnership between the U.S. President's Emergency Plan for AIDS Relief, the George W. Bush Institute, UNAIDS, Merck, and Roche.

Go Further is committed to creating a healthier future for women. The partnership aims to reduce new cervical cancer cases by 95 percent among women living with HIV in twelve African countries, which have some of the highest rates of HIV prevalence and cervical cancer incidence in the world.

Go Further invests in partner countries to integrate and scale-up cervical cancer screening and treatment services within existing platforms for HIV treatment and women's health.

The success of this program is made possible by the thousands of mothers, sisters, and daughters who bravely confront HIV and cervical cancer diagnoses every day.